

## Strip Tension Sensor HBZ

Measuring direction is parallel to mounting level.

No tare influence if levelled horizontally.



### Purpose

Measuring of the force component parallel to the longitudinal axis of the sensor-mounting surface.

### Functioning

Measuring of bending by means of strain gauge metrology.

### Advantages

- Insensitive to affecting forces that are right-angled staggered towards the measuring axis` position.
- Fast response to load changes.
- Direct mounting of the pillow block without insert plates, with or without fitting, customized projected.
- As a standard it can be overloaded up to 6-times of nominal load without metrological damage; 12-times until break-point; optional up to 24-times.
- High contraction stiffness of the sensor-body in direction of the measuring-axis, typical contraction distance at nominal load < 0.025 mm, practically no contraction in other levels, provides smoothest operation of the turn-rollers as well as string movement stability.

- Insensitive to tip momentum that occur due to string tension and height of the roller-axis above the mounting level.
- Integrated calibration norm for monitoring the entire signal-path and calibration.

### Assembly

Two parallel set circuit boards are connected at their outer endings through measuring-zones.

The dimensions are designed corresponding to the size of the pillow block housing and the sensors nominal load and can be modified for specific use if the need should arise.

The signal wire is firmly attached, led out at the front side and protected by a hydraulic hose.

### Use

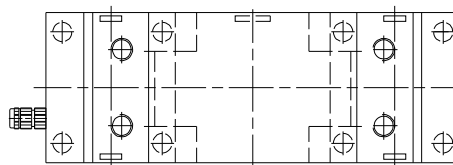
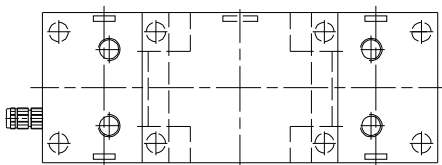
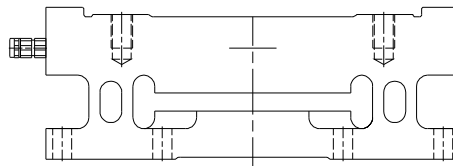
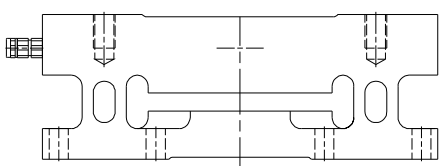
In strip tension measuring installations between pillow blocks of return rollers and their mounting base.

### Specification

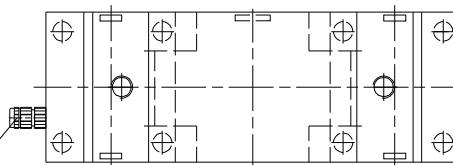
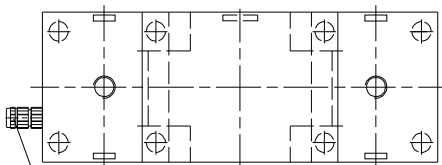
Bridge-resistor nominal	2000 $\Omega$
Bridge-resistor actual value	see test certificate
Charge voltage	35 V/DC max
Nominal characteristic value =	
Output signal at nominal load	0,5 mV/V Standard
Special characteristic value (optional)	0,2 mV/V; 0,25 mV/V
Calibration resistor	installed
Length of signal cable	10 m
Protective hose	11 m
Combined error	0.3 %
Hysteresis and linearity	0.2 % v. E.
Repeatability	< 0.1 % v. E.
Temperature gradient/ 10 K	< 0.1 % v. E.
Compensated temperature range	+ 20°C...+ 80°C
Maximum operating temperature range	0°C.... + 125°C
Nominal load according to series dwg.	kN min... kN max
Load limit without metrological damage	
at characteristic value 0.5 mV/V	600/1200 % Nominal load
at characteristic value 0.25 m V/V	1600/2400 % Nominal load

# HBZ

Stehlager eingepasst  
pedestal bearing fitted



4-Loch  
Befestigung  
4-hole  
fastening



2-Loch  
Befestigung  
2-hole  
fastening

Schlauchverschraubung  
Hose-sealing screw